

PAWPAW

Asimina triloba



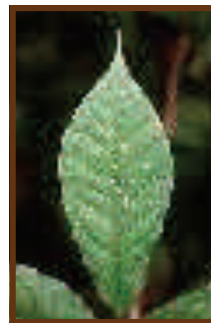
Virginia Department of Forestry

Mature Height	20 to 25 Feet	Soil Type	Well drained
Mature Spread	15 Feet	Flower Color	Dark Lavender
Mature Form	Densely Pyramidal	Foliage Color	Dark Green
Growth Rate	Medium	Fall Color	Yellow to Brown
Sun Exposure	Full to Partial Shade	Zones	5-8
Soil Moisture	Moist, well drained, deep		

Pawpaw, *Asimina triloba*, is found throughout most of the Eastern United States. It is a native understory or woodland edge tree, often found in moist places such as the bottoms of ravines, steep hillsides, and creek banks. One tree often gives rise over the course of decades to a sprawling colony via its root system, which suckers several feet away from the parent tree. Showy spring flowers are an unusual purple and are located at the tip of branches. The bark is rather smooth and dark gray in color. This small tree is easily recognized by its large, tropical-looking foliage, and is prized for its edible fruits that mature in late summer. When found in the open, it may reach 25 feet tall and 15 feet wide as an individual tree. Pawpaw is somewhat exact in its requirements for successful growth. In youth, it requires shady sites in which to become established, as intense sunlight will harm the leaves of young trees.



Ohio DNR



USDA—NRCS Plants Database



University of Kentucky



Development of this fact sheet is funded by a grant from the Nina Mason Pulliam Charitable Trust.

Plant A Million is sponsored by Hoosier Heartland Resource Conservation and Development Council and the Soil and Water Conservation Districts of Boone, Brown, Hamilton, Hancock, Hendricks, Johnson, Marion, Monroe, Morgan and Shelby Counties (All Rights Reserved).

Hoosier Heartland RC&D Council and its partnering organizations are equal opportunity program providers and employers.

Hoosier Heartland RC&D Council, 6041 Lakeside Boulevard, Indianapolis, IN 46278 ~ (317) 290-3250 ~ www.plantamillion.org